



ALMA MATER STUDIORUM
UNIVERSITÀ DI BOLOGNA

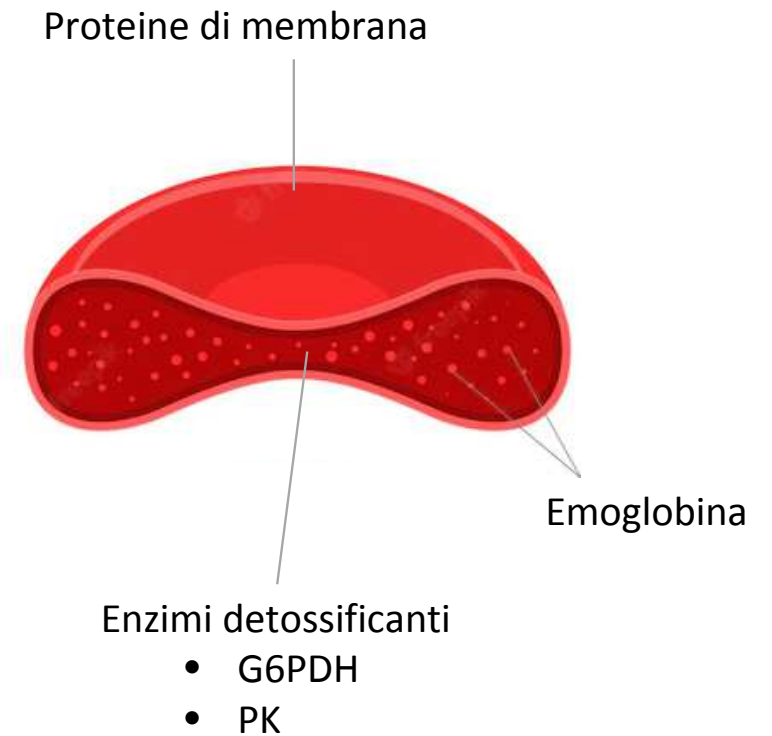
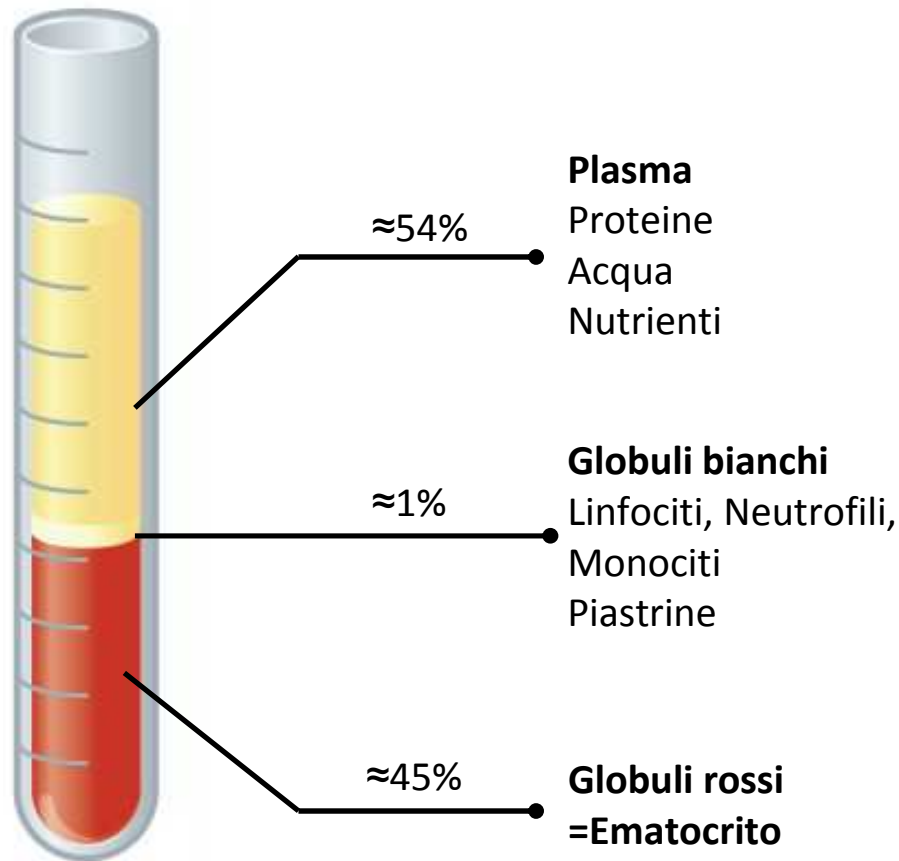
Anemia e policitemie: come orientarsi?

Giovanni Marconi

UO Ematologia

Ospedale S. Maria delle Croci, Ravenna (RA)

Il sangue e l'eritrocita



Anemia e policitemia



Anemia
Hb 8.4 g/dL
Hct 34%

I globuli rossi sono
-Persi
-Distrutti
-Prodotti male
-Non prodotti



Normale
Hb 13.8 g/dL
Hct 44%
MCV 86 fl
RDW 12%
MCHC 36%

I globuli rossi sono
prodotti in eccesso

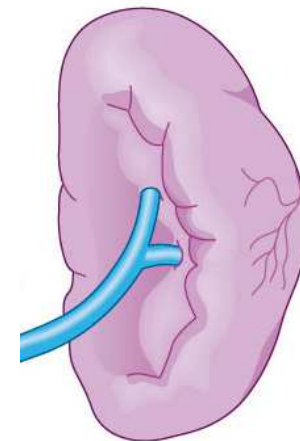
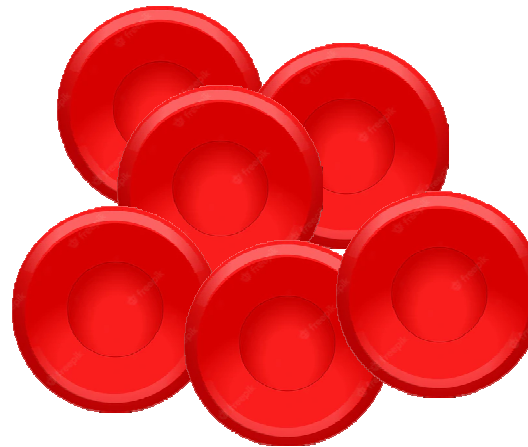
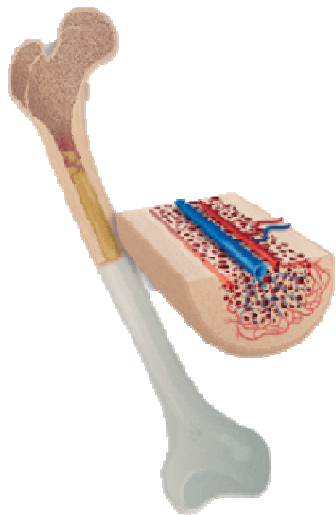


Policitemia
Hb 18 g/dL
Hct 54%



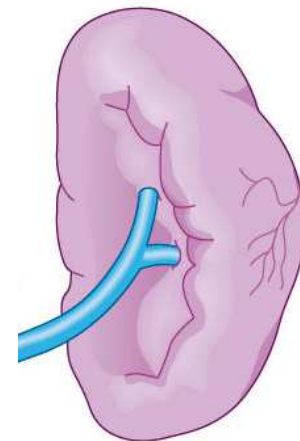
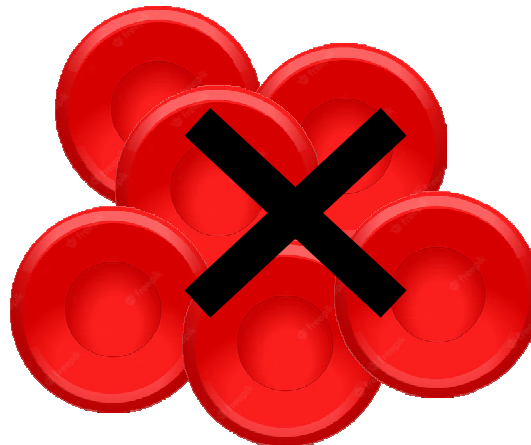
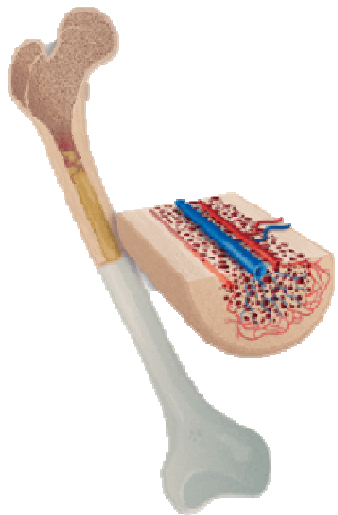
ALMA MATER STUDIORUM
UNIVERSITÀ DI BOLOGNA

La vita dell'eritrocita

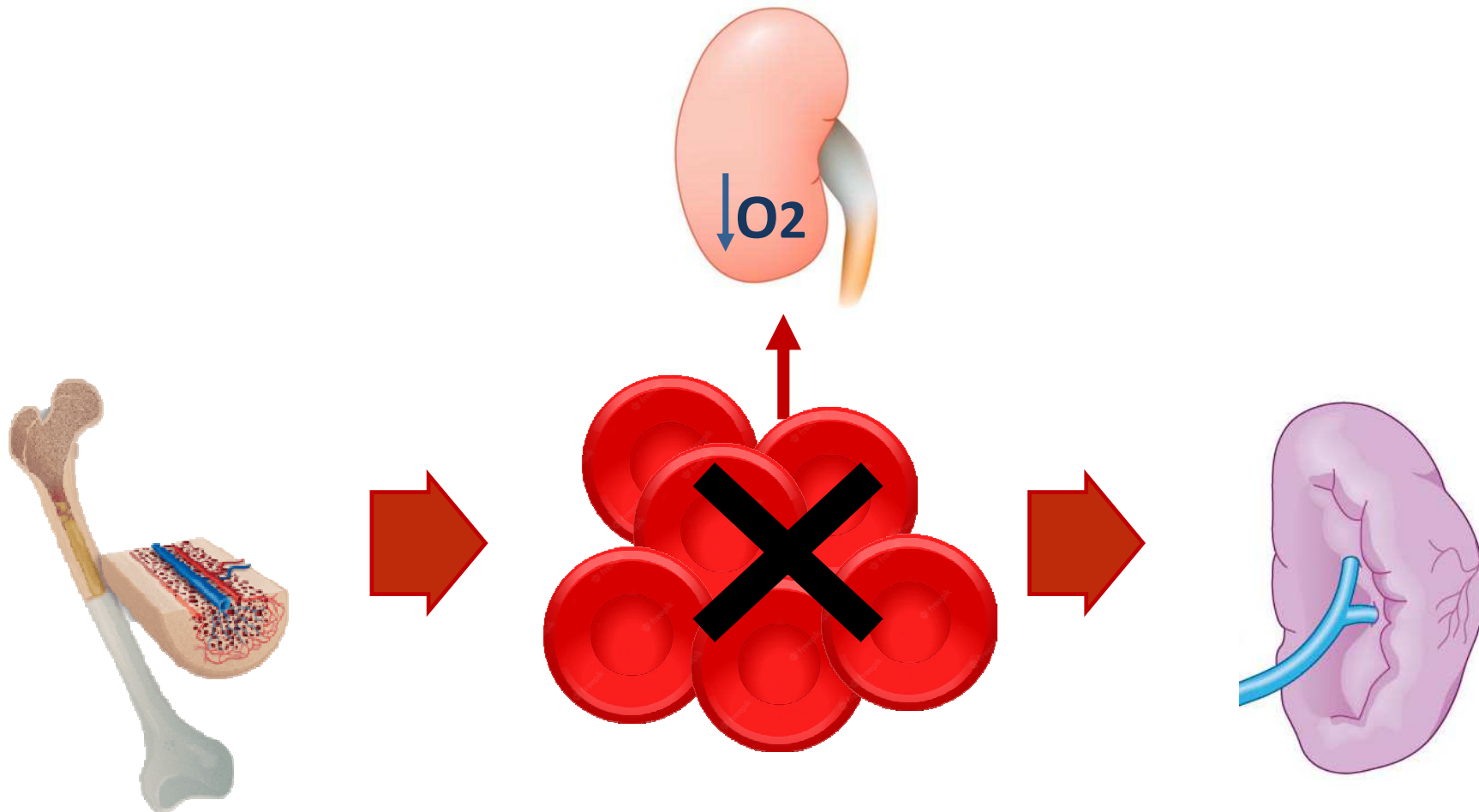


120 giorni

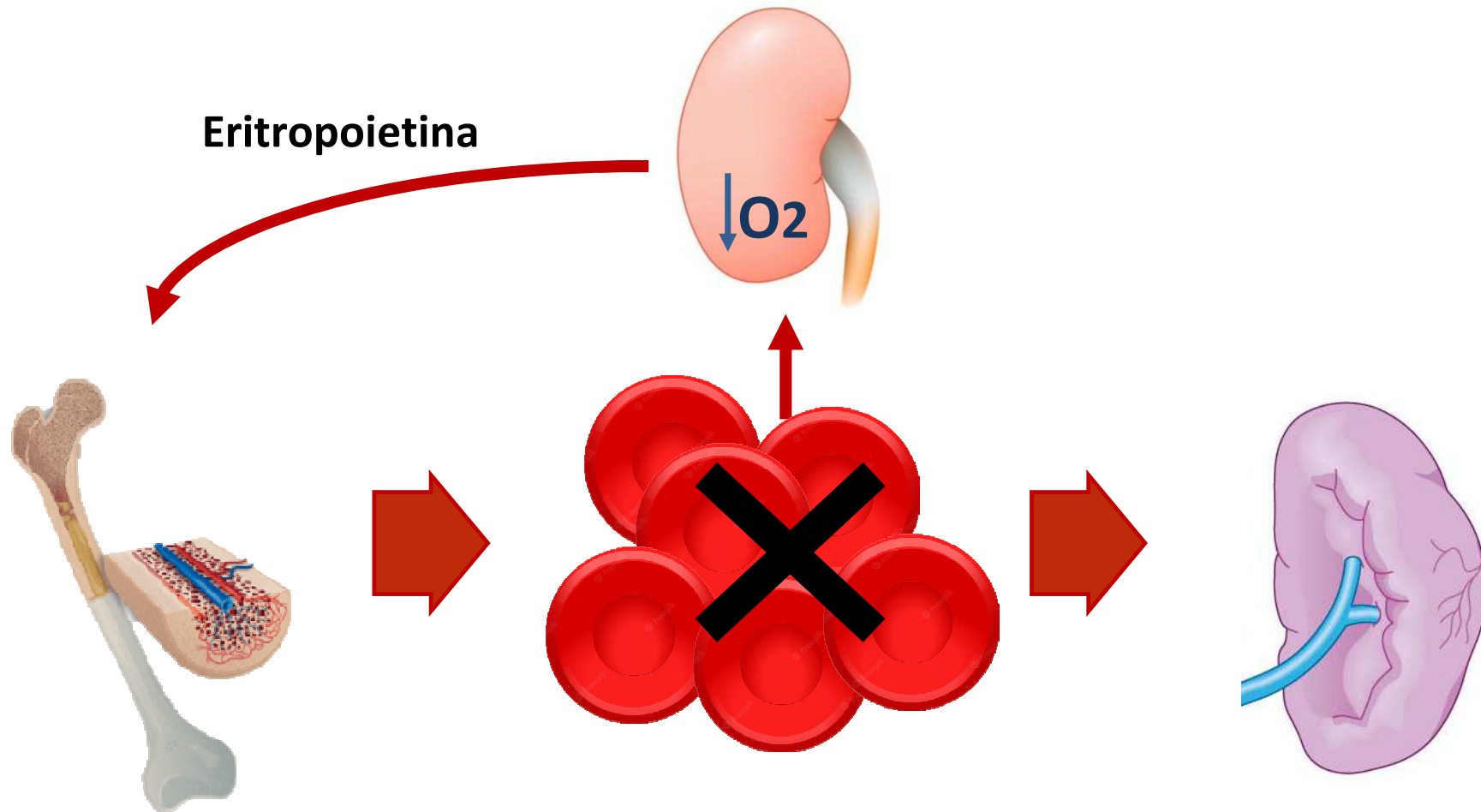
La vita dell'eritrocita



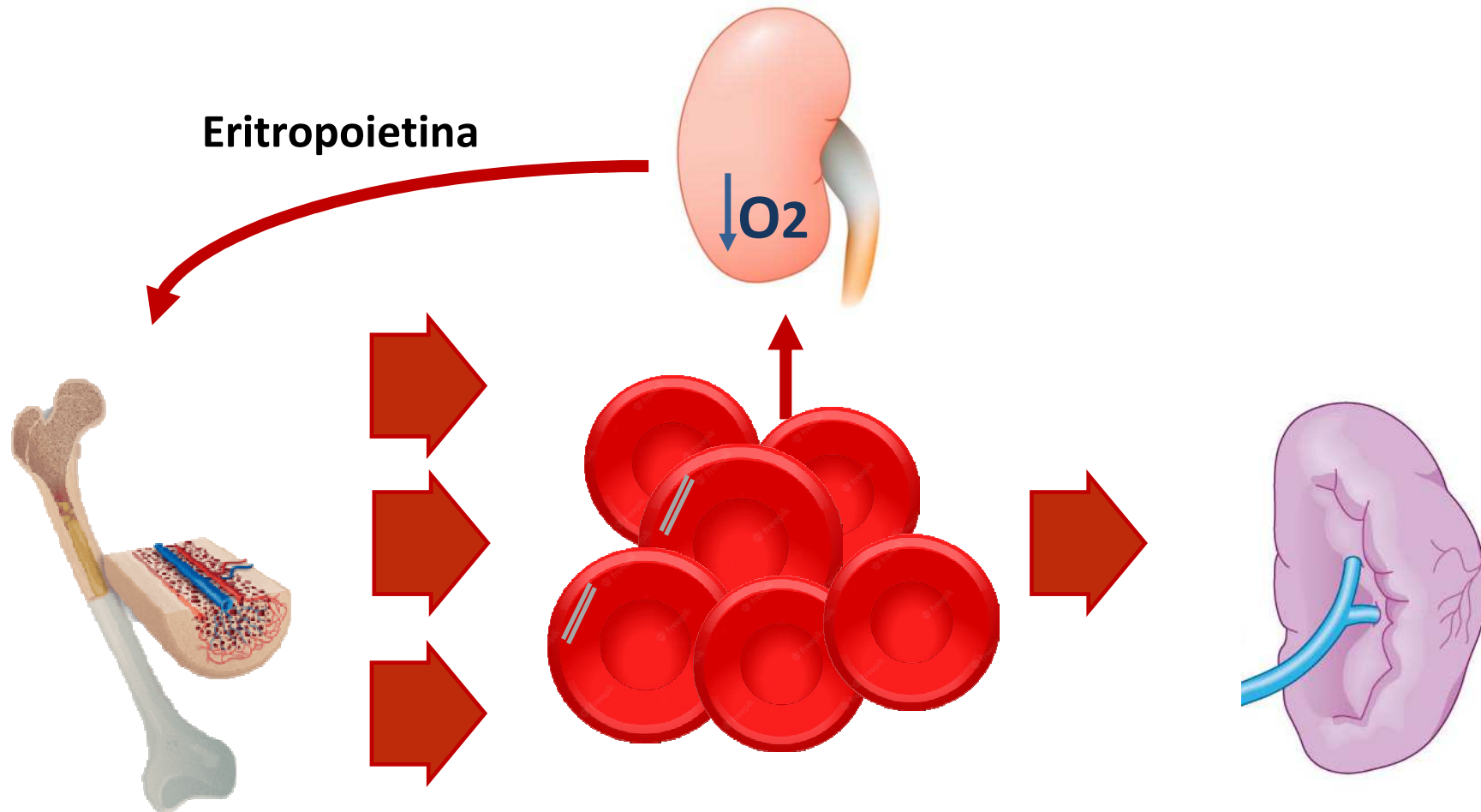
La vita dell'eritrocita



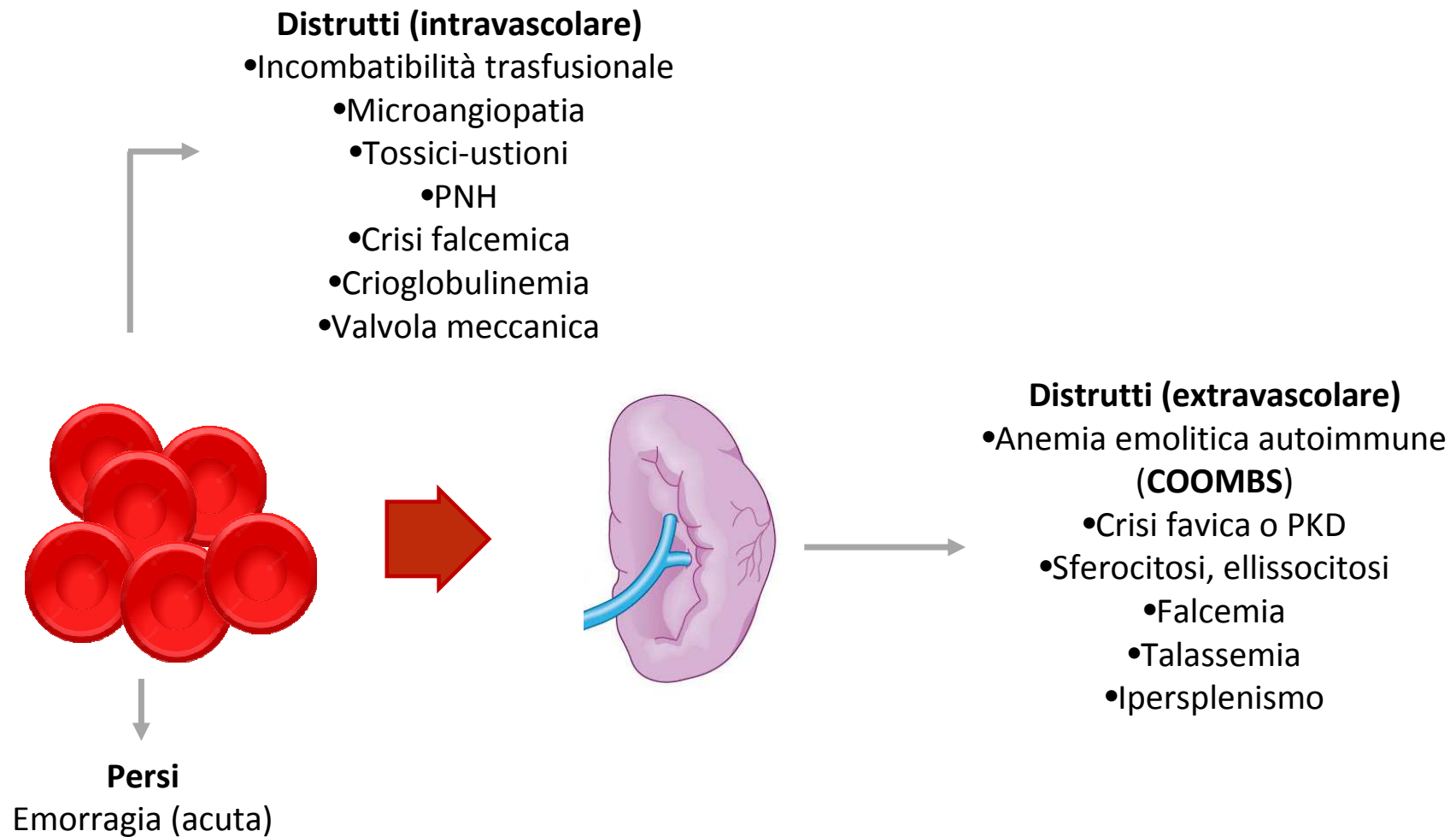
La vita dell'eritrocita



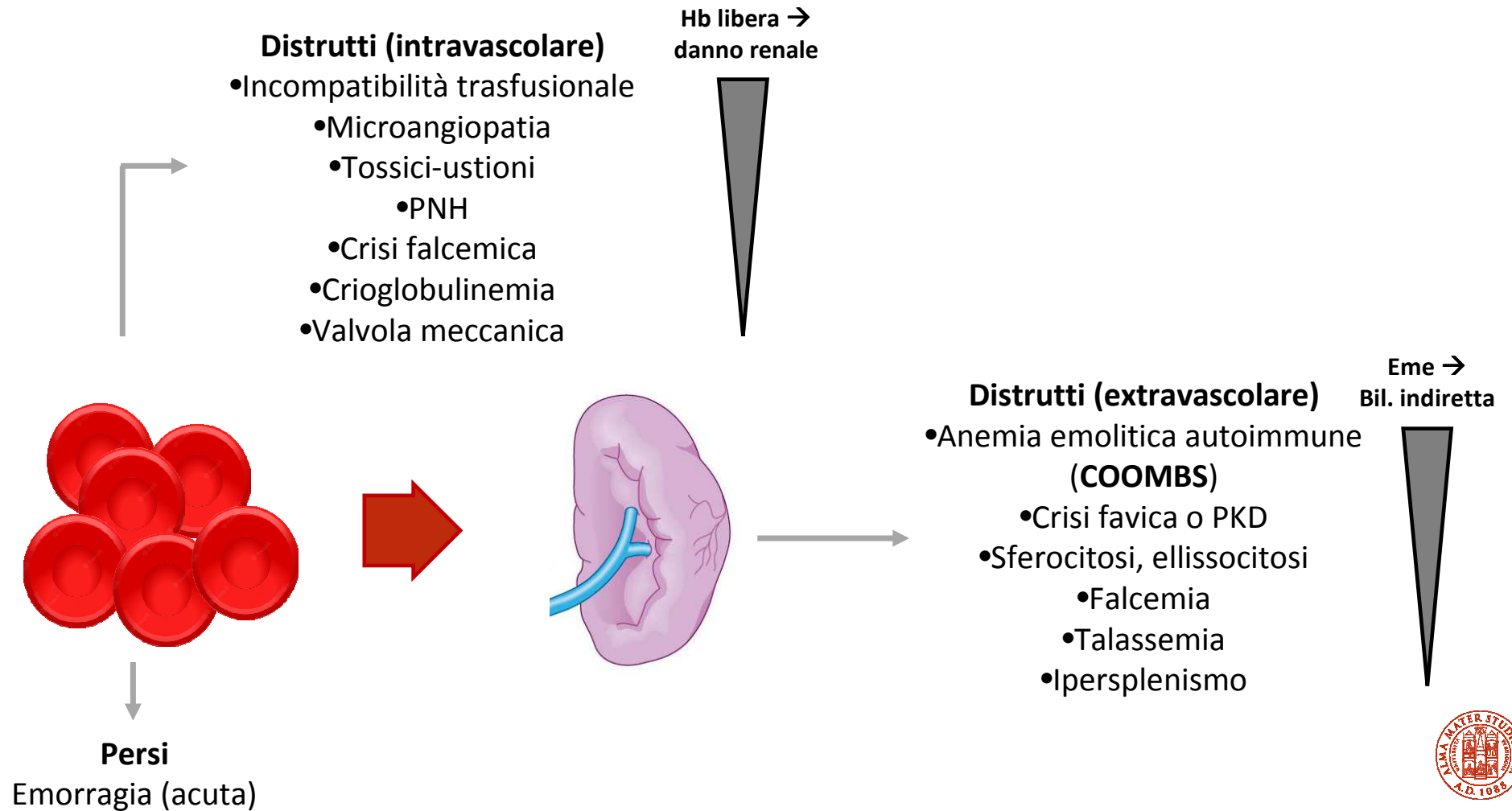
La vita dell'eritrocita



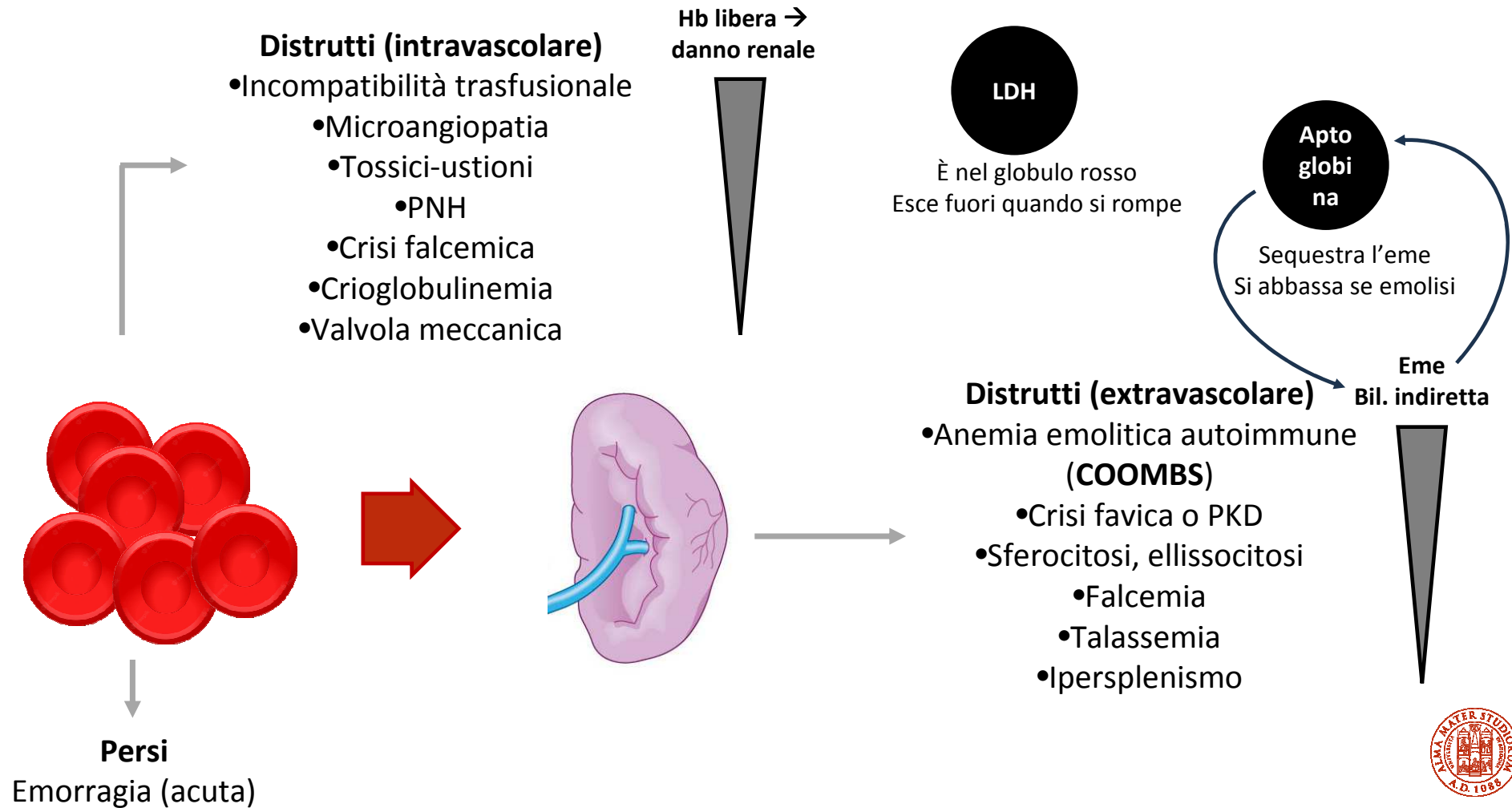
L'anemia: i globuli rossi vengono distrutti o persi (IV tipo)



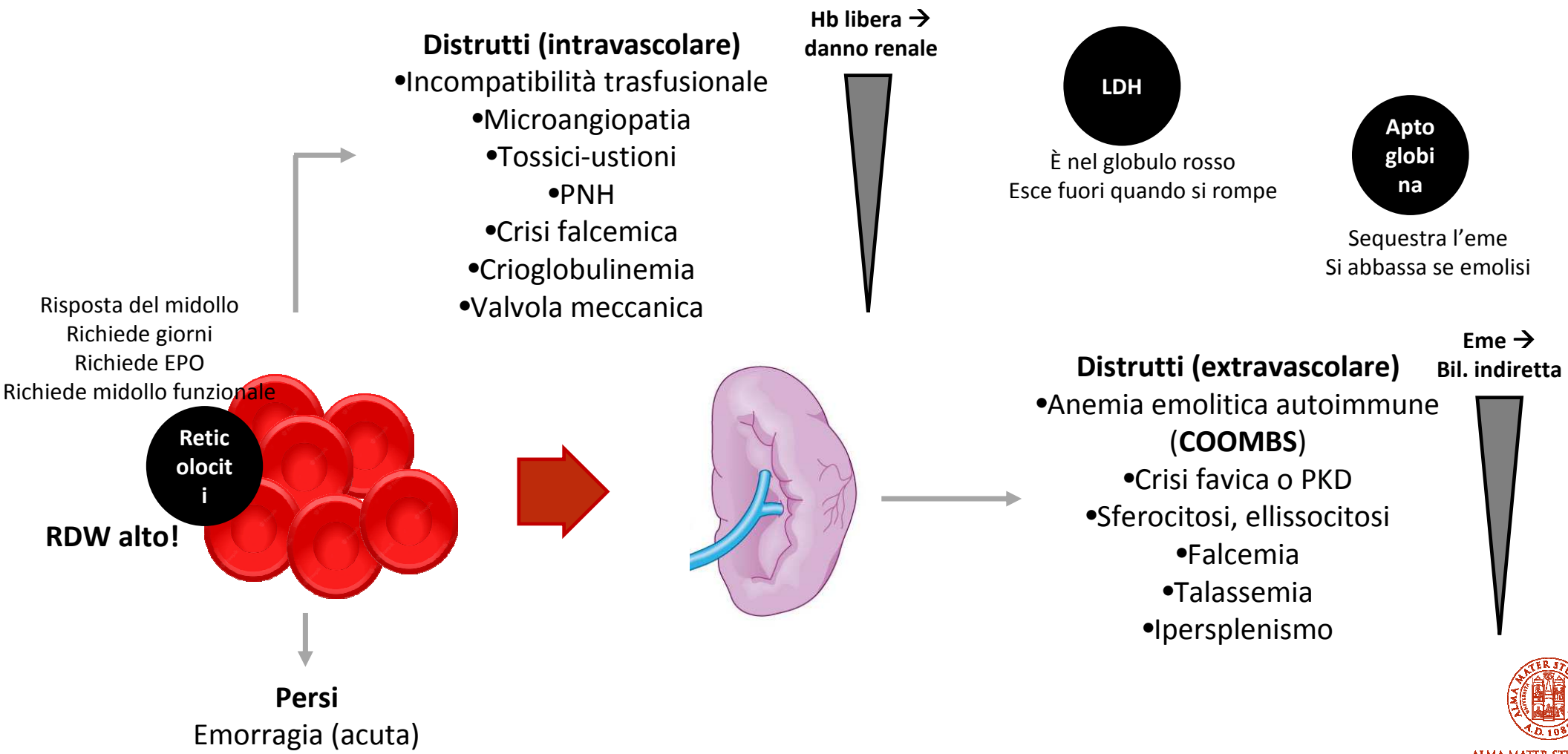
L'anemia: i globuli rossi vengono distrutti o persi (IV tipo)



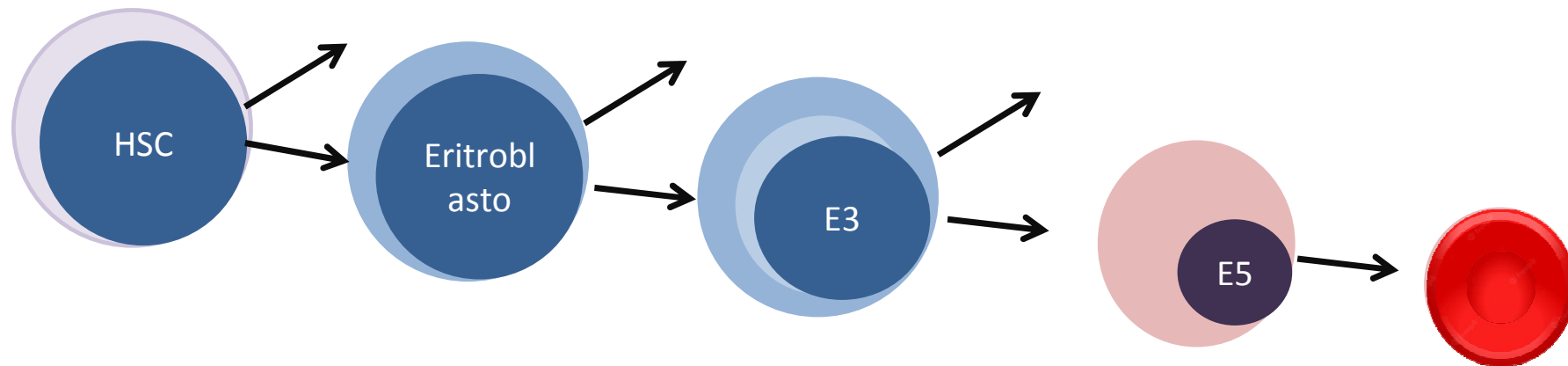
L'anemia: i globuli rossi vengono distrutti o persi (IV tipo)



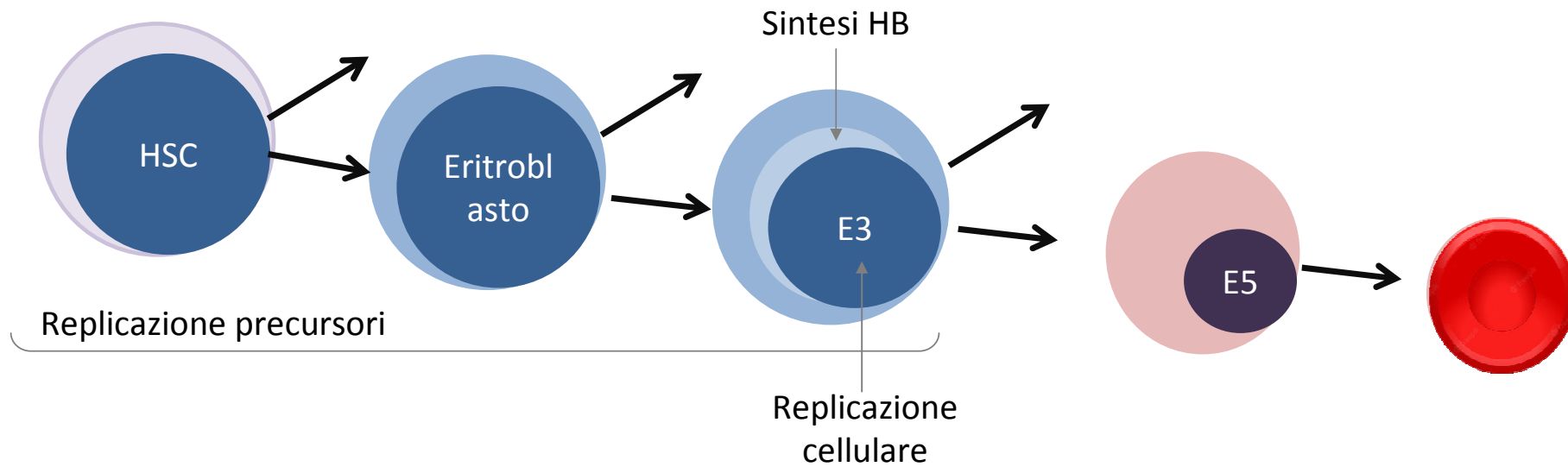
L'anemia: i globuli rossi vengono distrutti o persi (IV tipo)



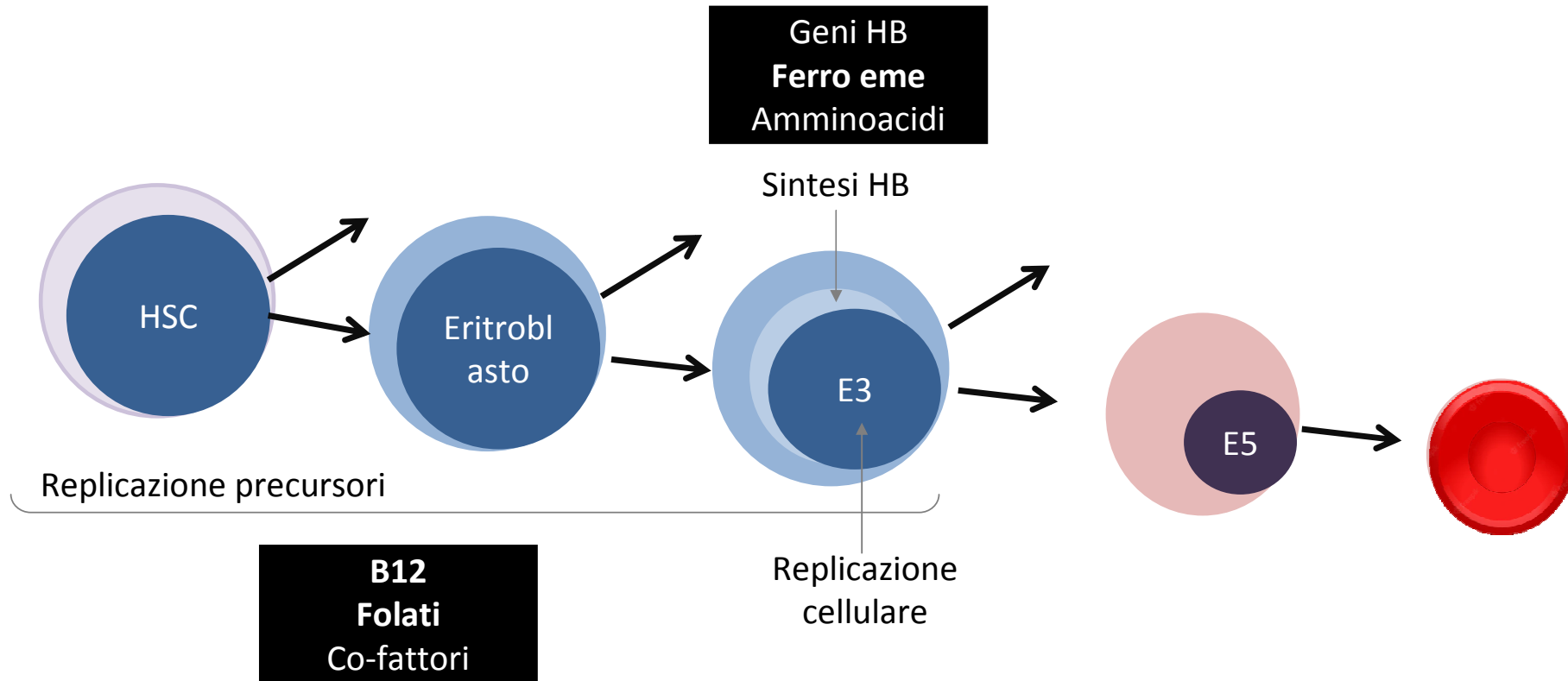
L'anemia: i globuli rossi vengono prodotti male



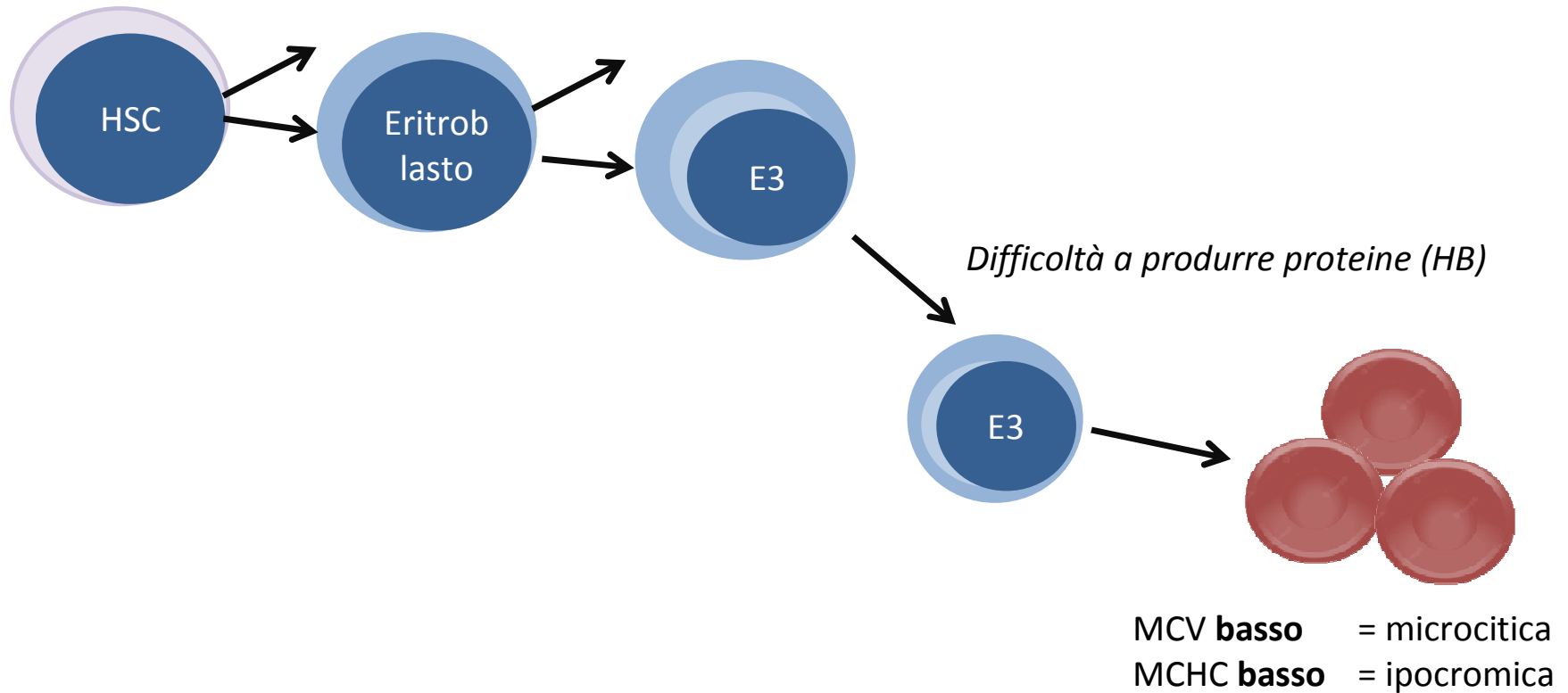
L'anemia: i globuli rossi vengono prodotti male



L'anemia: i globuli rossi vengono prodotti male



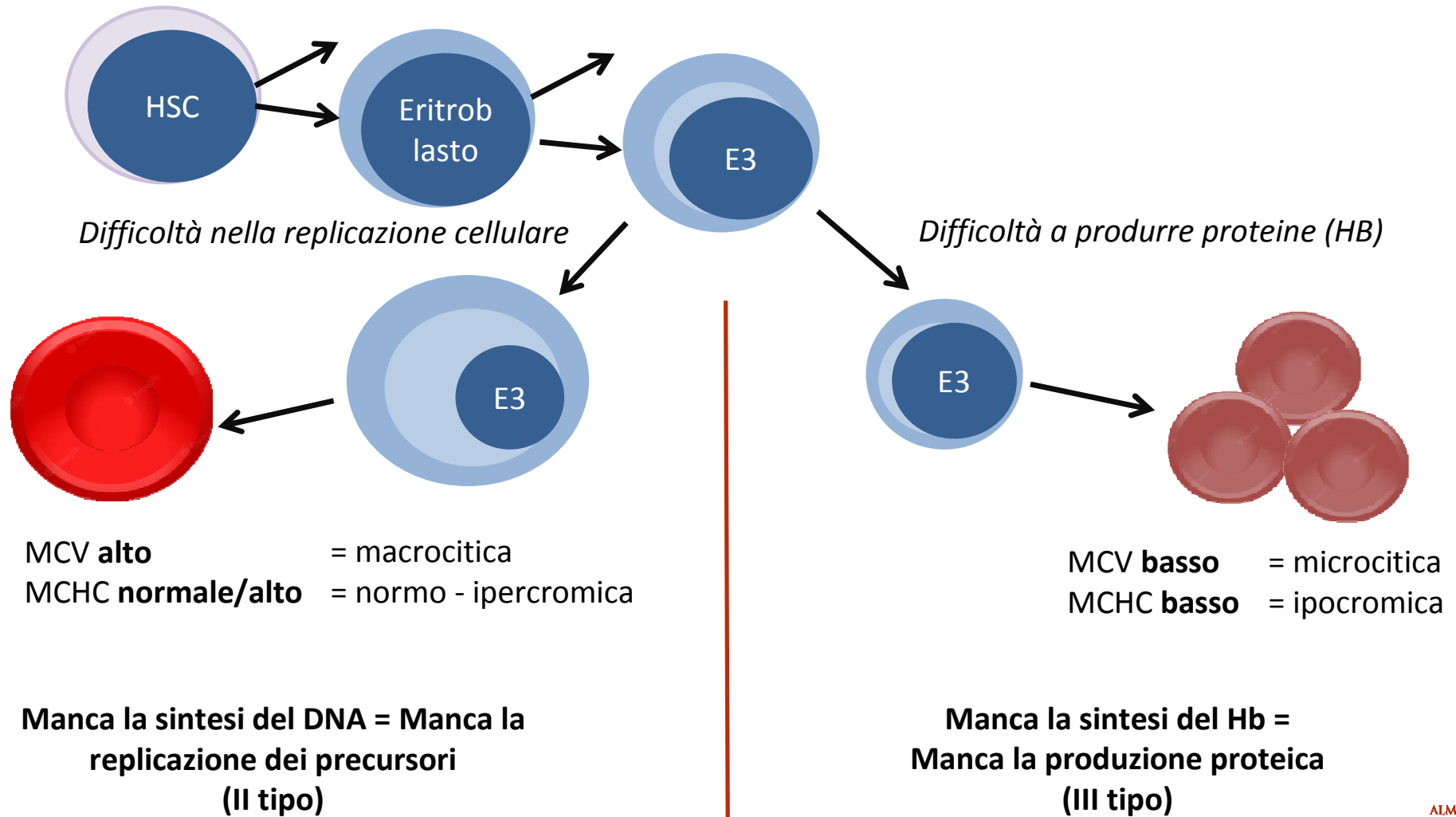
L'anemia: i globuli rossi vengono prodotti male



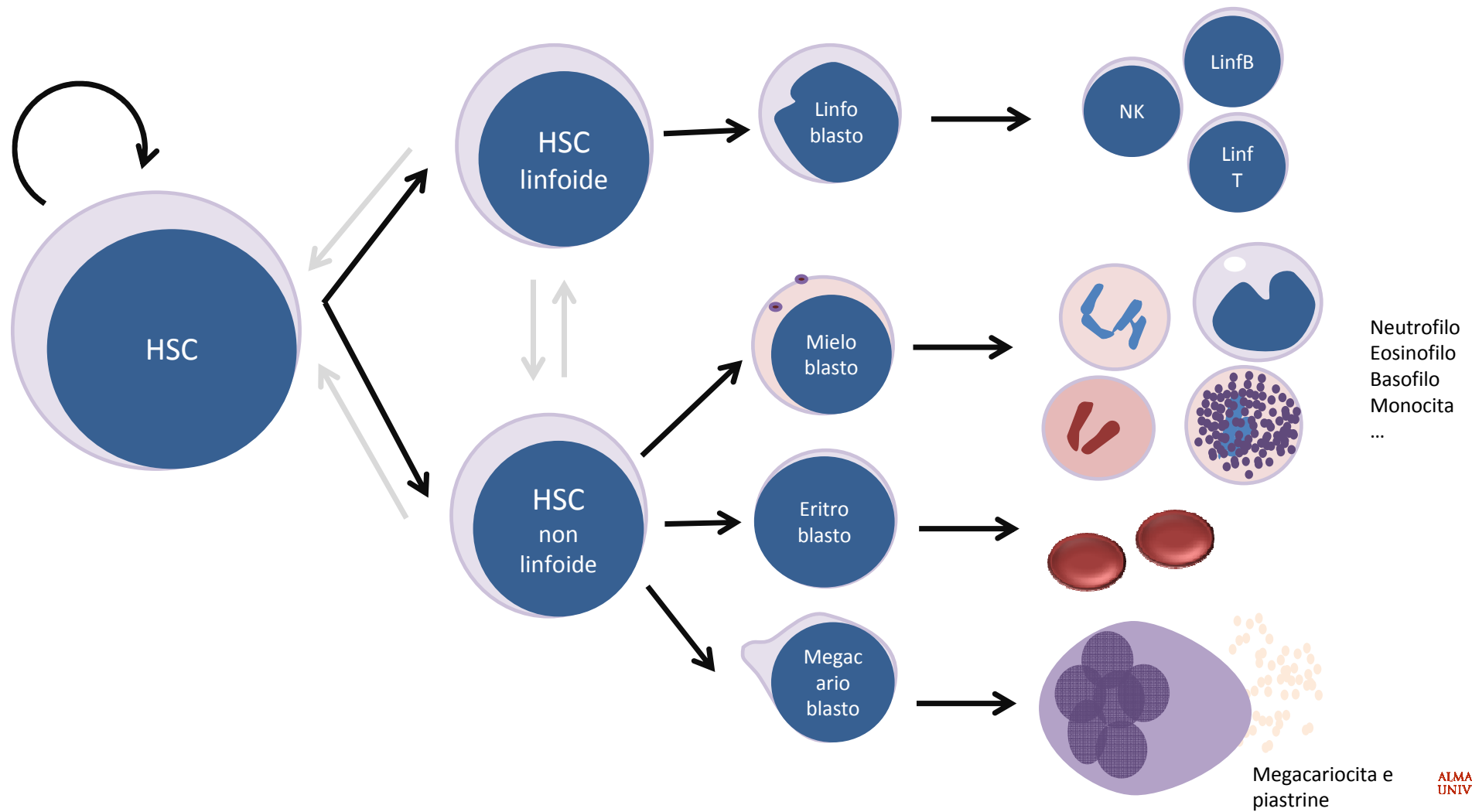
**Manca la sintesi del Hb =
Manca la produzione proteica
(III tipo)**



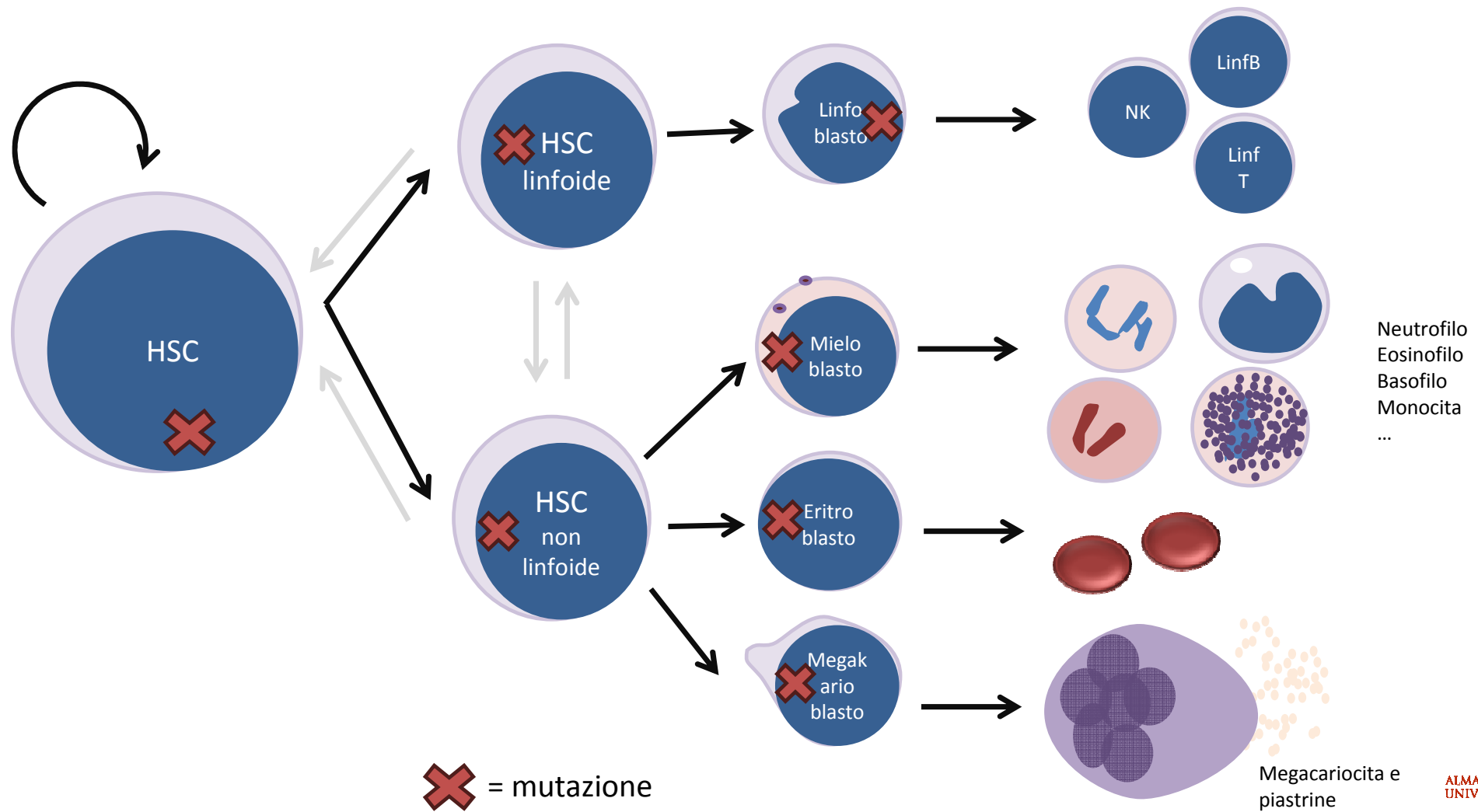
L'anemia: i globuli rossi vengono prodotti male



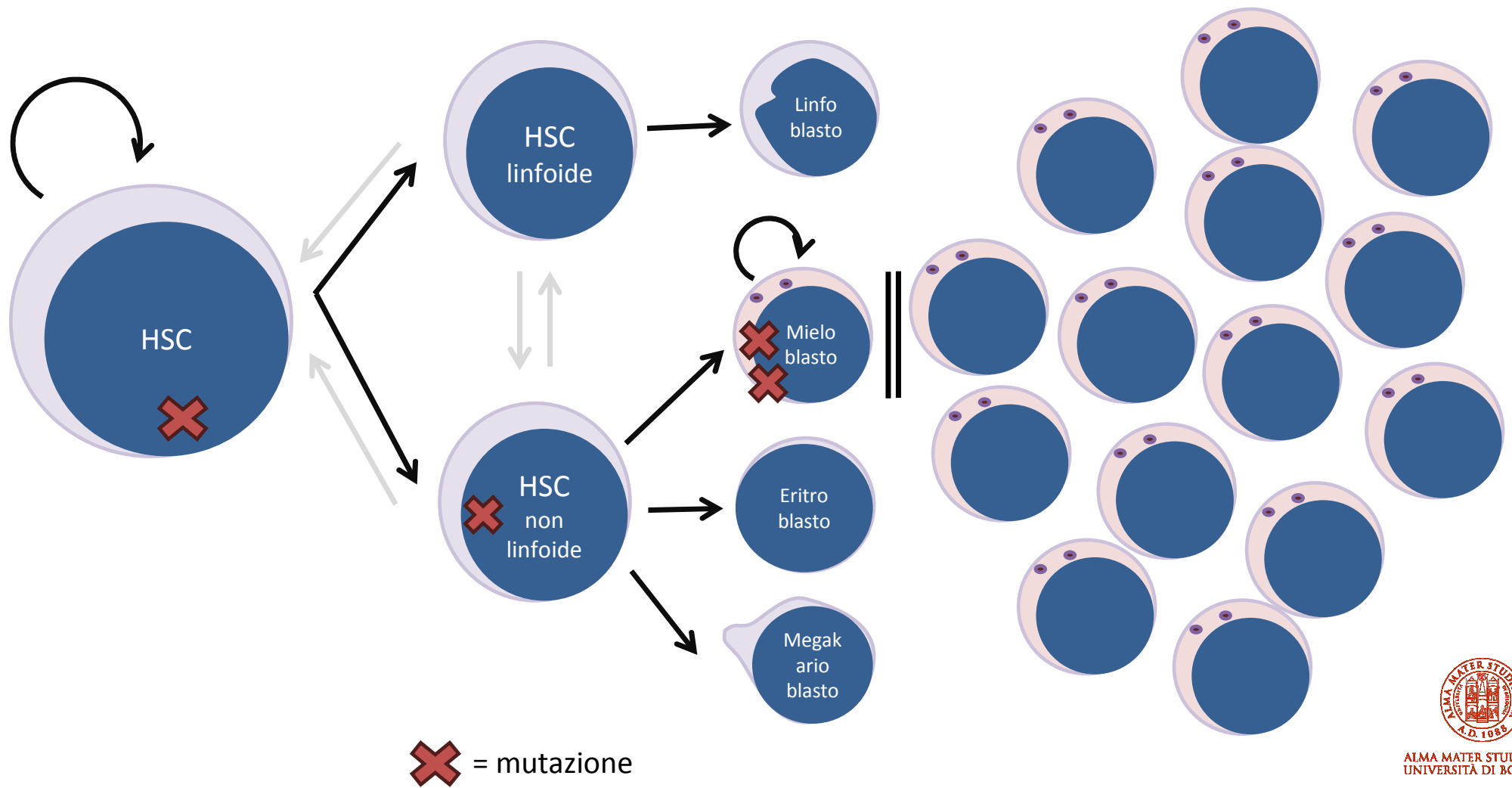
L'anemia: i globuli rossi non vengono prodotti (I tipo)



L'anemia: i globuli rossi non vengono prodotti (I tipo)



L'anemia: i globuli rossi non vengono prodotti (I tipo)



Il pannello dell'anemia

- Emocromo
- Elettroforesi sierica
- B12
- Folati
- (Rame)
- Ferro
- Ferritina
- Transferrina
- VES
- PCR
- LDH
- Aptoglobina
- Coombs
- Reticolociti
- Bilirubina T/F
- Esame urine
- Eritropoietina
- Creatinina
- GFR



Il pannello dell'anemia

- Emocromo
- Elettroforesi sierica



Screening
affezioni
sostitutive

- B12
- Folati
- (Rame)



Carenza
vitamine
emoattive

- Ferro
- Ferritina
- Transferrina
- VES
- PCR



Bilancio
marziale
↕
Flogosi

- LDH
- Aptoglobina
- Coombs
- Reticolociti
- Bilirubina T/F
- Esame urine



Emolisi

- Eritropoietina
- Creatinina
- GFR



Segnalazione
renale

Il pannello dell'anemia

- Emocromo
- Elettroforesi sierica



Screening
affezioni
sostitutive

- B12
- Folati
- (Rame)



Carenza
vitamine
emoattive

- Ferro
- Ferritina
- Transferrina
- VES
- PCR



Bilancio
marziale
↕
Flogosi

- LDH
- Aptoglobina
- Coombs
- Reticolociti
- Bilirubina T/F
- Esame urine



Emolisi

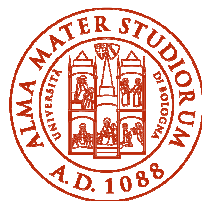
- Eritropoietina
- Creatinina
- GFR



Segnalazione
renale

- **Ricognizione anamnestica**
- **Farmacoterapia**
- **Tempo di insorgenza**





ALMA MATER STUDIORUM
UNIVERSITÀ DI BOLOGNA

giovanni.marconi@unibo.it

www.unibo.it